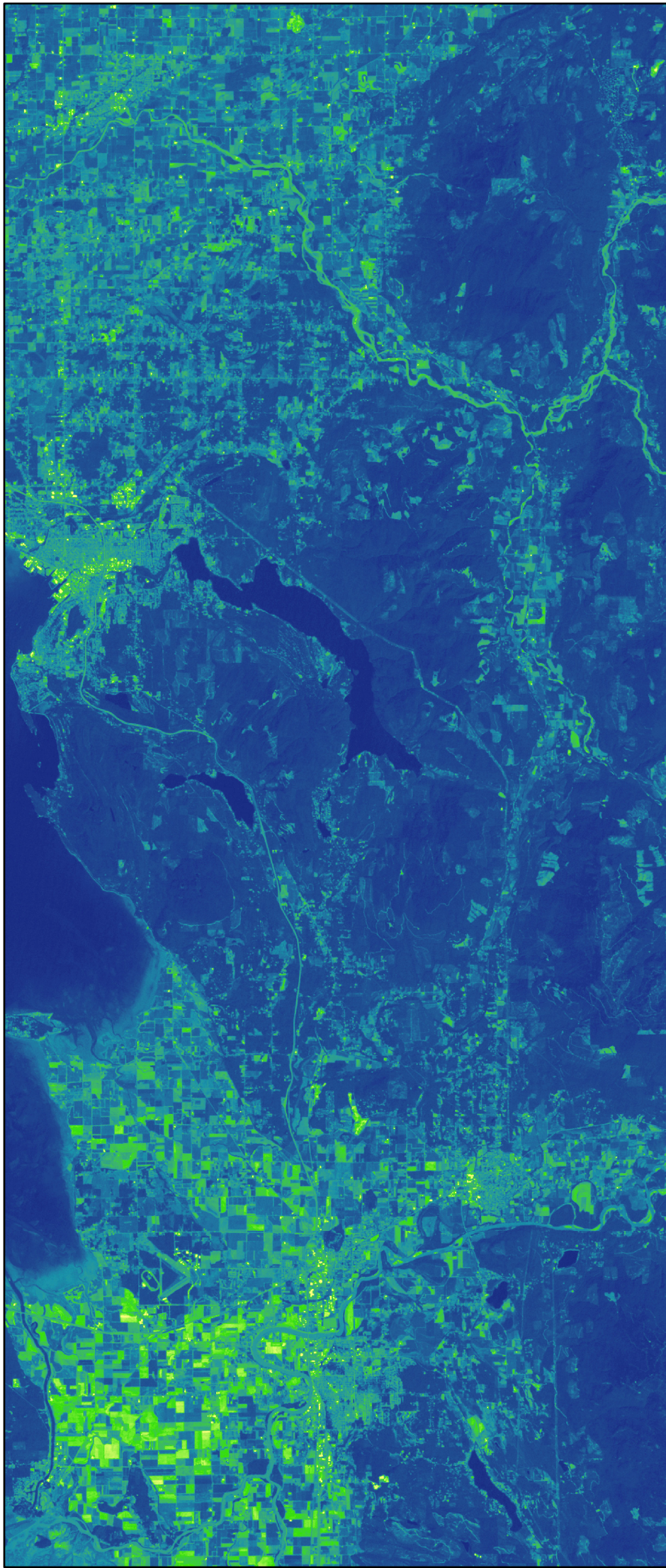
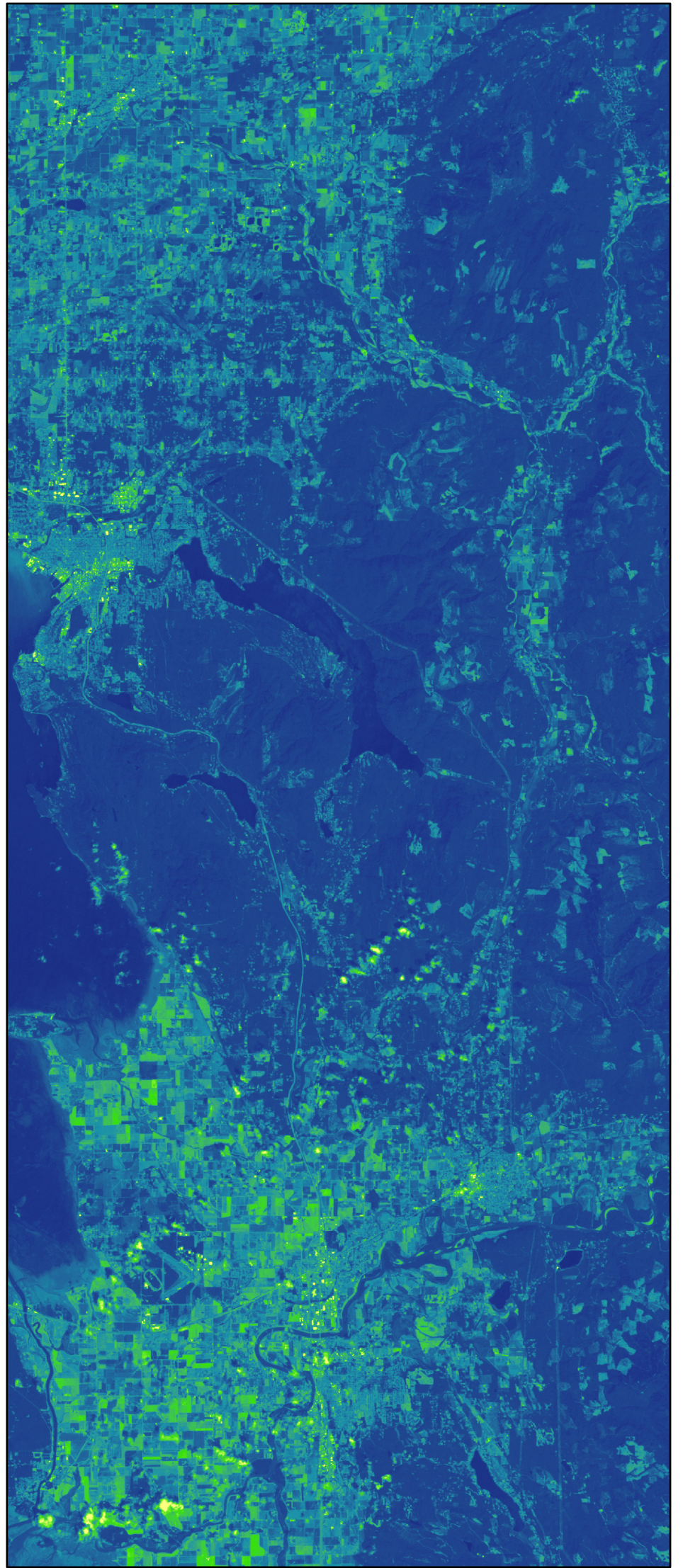


# Normalized Difference Vegetation Index Whatcom and Skagit Counties, WA



July 1998



July 2008

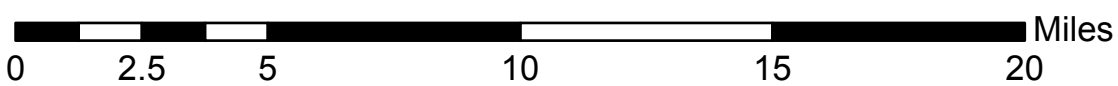
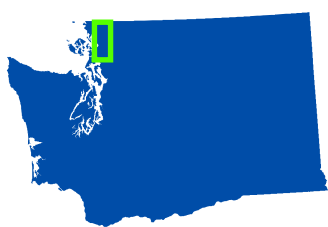
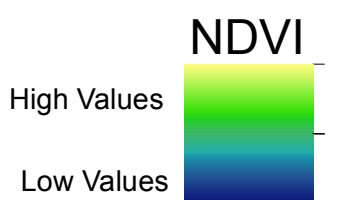


False Color maps of Normalized Difference Vegetation Index (NDVI) for Whatcom and Skagit Counties in July of 1998 and 10 years later in July of 2008. NDVI is used as a measure of plant growth, vegetation cover and biomass production. Chlorophyll absorbs large portions of the red portion of the visible electromagnetic spectrum, and reflects large portions of the near infrared.

NDVI is calculated as:

$$(NIR - Red) / (NIR + Red)$$

Healthy vegetation absorbs more red and reflects more near infrared, leading to higher NDVI values.



Tabor Reedy, WWU, 1/27/15  
Data: USGS Glovis, Landsat 4/5  
Projection: UTM Zone 10 North  
Datum: NAD 1983