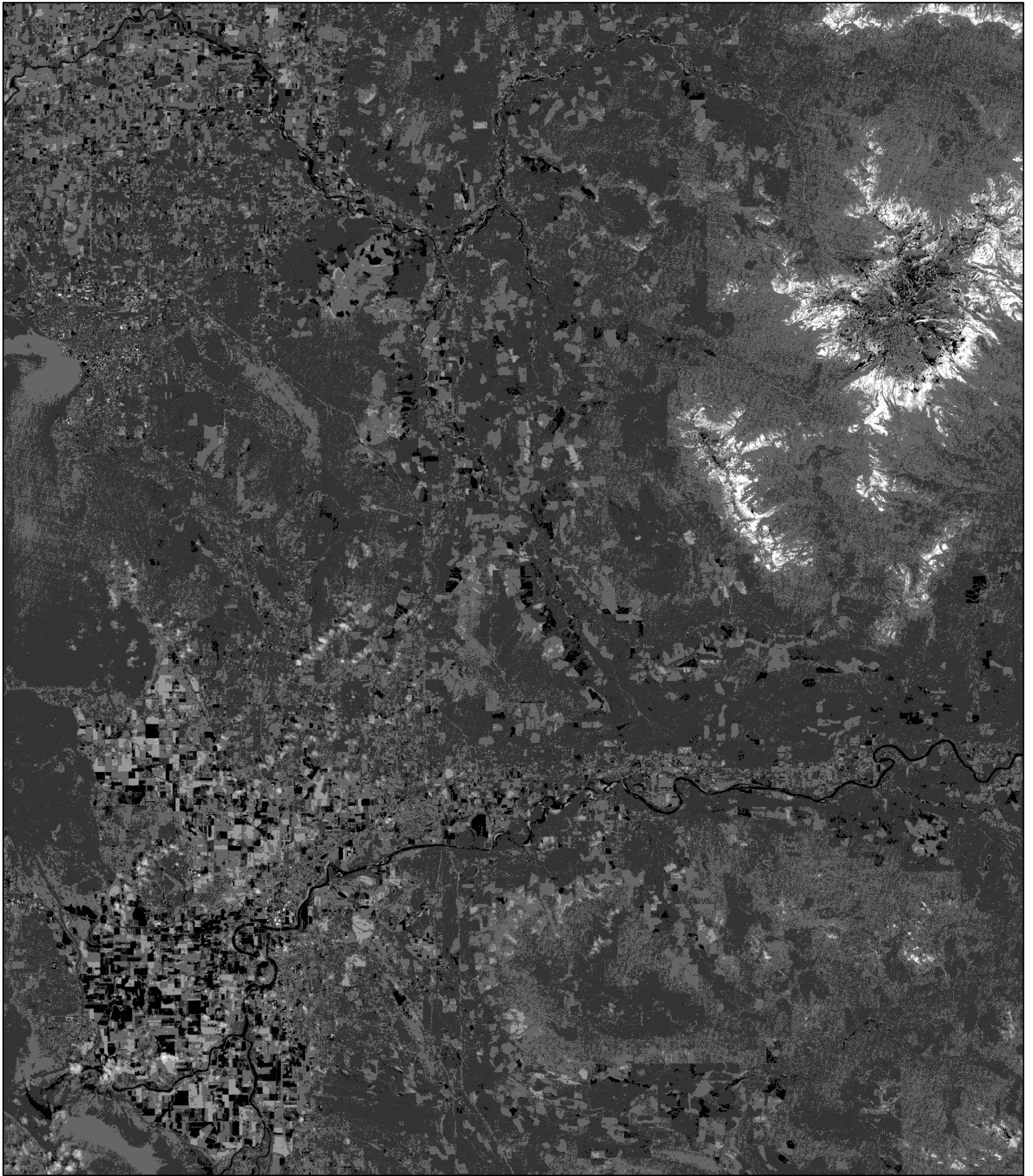


Change in Normalized Difference Vegetation Index Whatcom and Skagit Counties, WA



This classified map catalogues changes in the Normalized Difference Vegetation Index (NDVI) between July 1998 and July 2008 using Jenks Natural Breaks, slightly adjusted to have a 0 point. NDVI is defined as: $(NIR - Red) / (NIR + Red)$

This index presents higher NDVI Values for healthier plants. Negative values indicate a lower NDVI value in 2008 compared to 1998. Changes in NDVI can be accounted for by changes in land use, atmosphere, and minor cloud cover.

Tabor Reedy, WWU, 1/27/15
Data: USGS Glovis, Landsat 4/5
Projection: UTM Zone 10 North
Datum: NAD 1983

