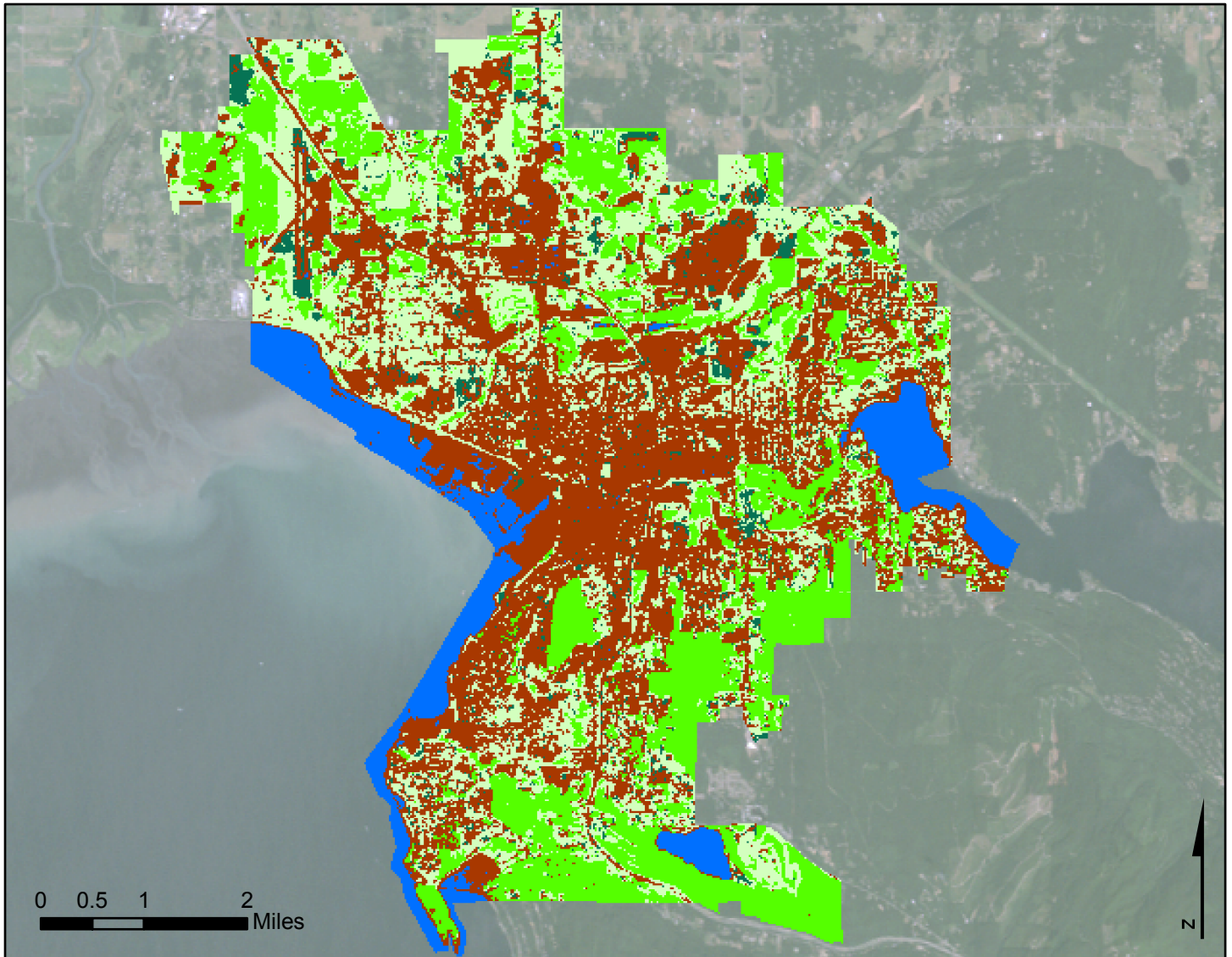


# Supervised Land Cover Classification, Bellingham WA



## Land Cover Type



Supervised Land Cover Classification of Bellingham Washington based on spectral reflectance signatures in the Near Infrared (Band 3), Red (Band 2), and Green (Band 1). The scatterplot at the right shows how each land cover can easily be differentiated as it splits into groups based on reflectance values. It also shows how much variation there is in classes like the built urban environment and bare ground, which can easily be mistaken. Distinct groupings like in water indicates that a more specific classification may be useful.

