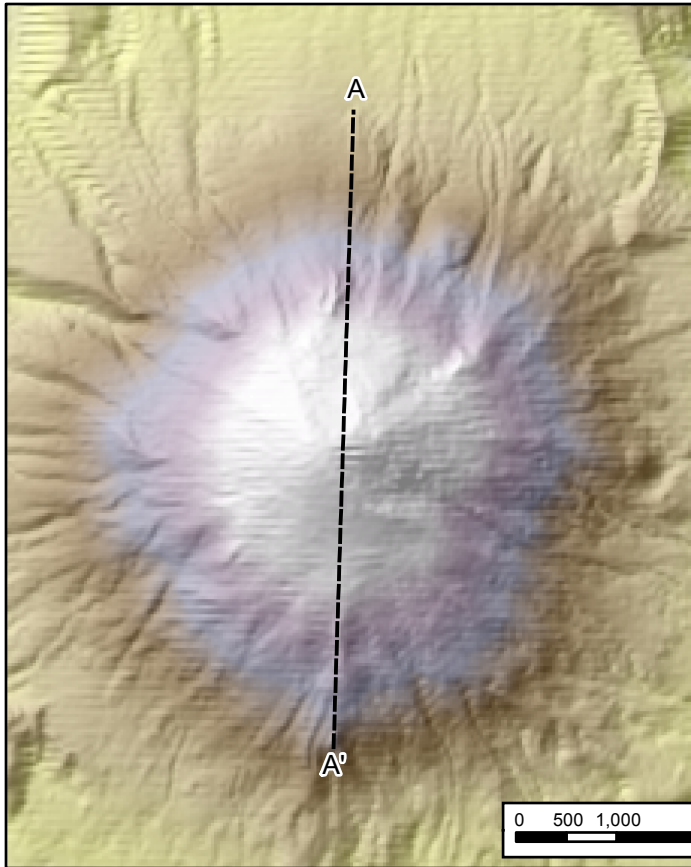
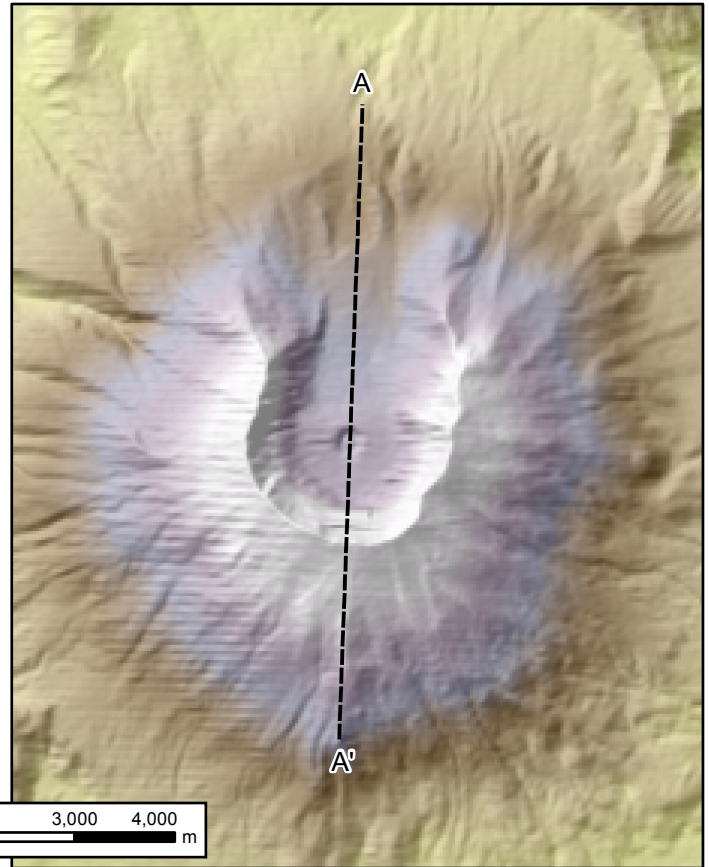


# Mt. St. Helens Elevation Profiles Pre and Post May 1980 Eruption

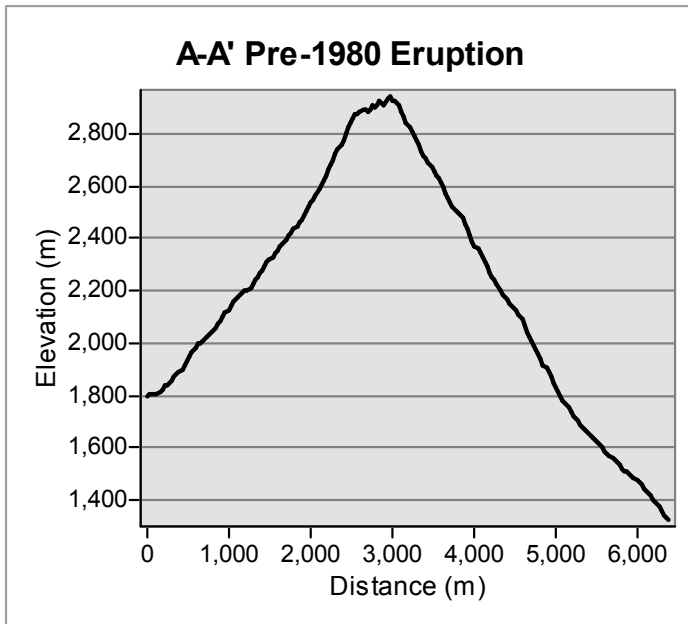
Pre-1980 Eruption



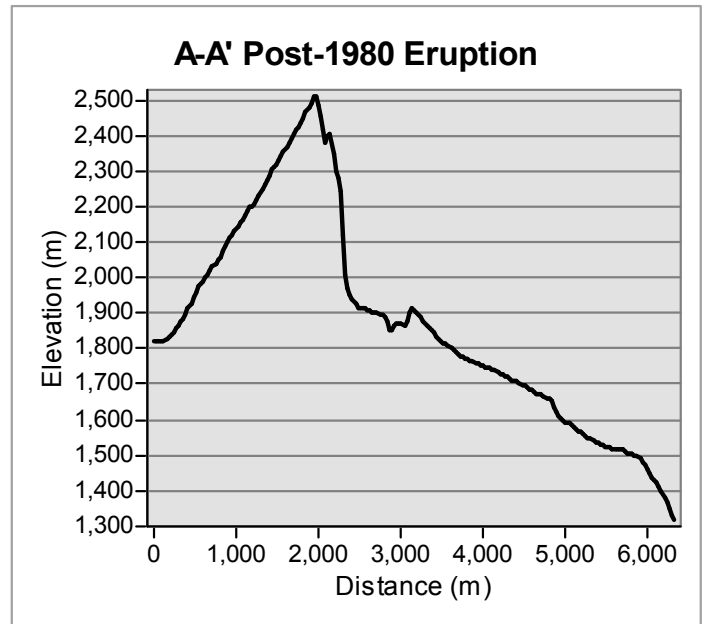
Post-1980 Eruption



A-A' Pre-1980 Eruption



A-A' Post-1980 Eruption



The eruption of Mt. St. Helens May 18th 1980 caused a significant change in the landscape. Weakening from magma injection on the North Slope caused the largest recorded landslide with a volume of approximately 2.8 cubic kilometers covering approximately 23 square miles with lahars reaching the Columbia and Cowlitz rivers. The mass movement event can easily be observed using elevation profiles.

Tabor Reedy, WWU, 3/3/15  
Data: Western Washington University  
Projection: UTM Zone 10N  
Datum: North American Datum 1927

